

RB 1200 Pressure Regulator

- > For Residential applications
- > Angle or in-line design
- > Built-in shut-off valve
- > Built-in safety relief valve
- > Inlet strainer

Applications

The RB 1200 regulator is designed both for residential and light commercial applications.

Its design makes it the best-performance regulator for medium-pressure service line where it accommodates large inlet pressure variations, even at very low pressure while keeping outlet pressure constant. RB 1200 is available with two different connection styles: in-line and angle.

Balanced type regulator ensures constant outlet pressure even with fluctuating inlet pressure. This feature improves the exceptional performance of this single-stage regulator.

Optional safety shut-off valve cuts the gas flow when the outlet pressure exceeds the set point (OPSO) or in case of pressure drop (OPSO / UPSO).

Safety relief valve avoids SSV action in case of heat and transient surge of pressure increase. SRV pressure is factory-set but it can be re-adjusted by acting on a screw. Built-in filtering device is made of a metal strainer with 0,5 mm filtration grade

Description

RB 1200 is a spring-acted regulator with built-in SSV and SRV. It also has a strainer for filtering purposes.

Technical Features

Maximum inlet pressure	Up to 10 bar (standard 5 bar)
Outlet pressure	0,013 bar – 0,13 bar
Accuracy and lock-up pressure	AC 5 - 10 / SG 10 -
Operating temperature	15 -20°C / +60°C
Acceptable gases	Natural gas, propane, butane, air, nitrogen
Safety devices	Built-in SRV Over-pressure shut-off Under-pressure shut-off

Sizes and Connections

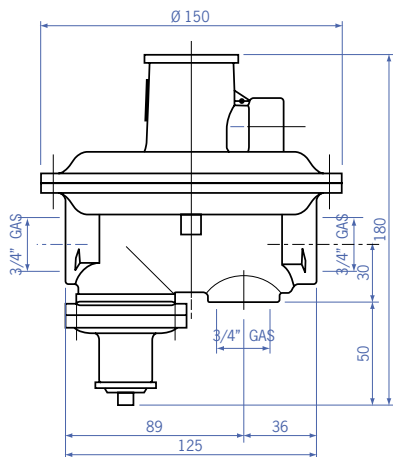
Sizes	DN 3/4"
Connections	Female threaded ISO 7/1

Materials

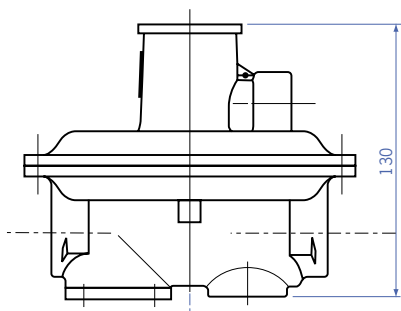
Body/actuators	Die-cast aluminium
Seals	Nitrile rubber
Membrane	Nitrile rubber



▶ RB 1200 with SSV



► **RB 1211-1212 – Weight 1,1 Kg**



► **RB 1210 – Weight 1 Kg**

To be specified when ordering

- Regulator type
- Minimum and maximum inlet pressure
- Outlet pressure range
- Outlet pressure setting
- Connection type
- OPSO/UPSO setting

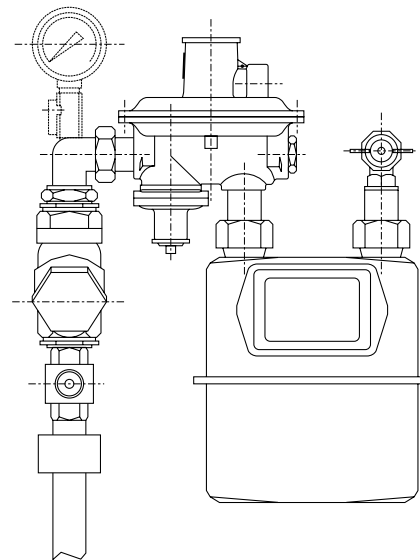
Installation

Gas must flow through the valve body in the same direction as the arrow cast on the body.

The RB 1200 regulator can be mounted in any position.

The set-point must be adjusted slightly if the regulator is positioned so that the loading spring is not vertical and pointing upwards.

When changing the connection style (in-line or angle), ensure there are no leaks and that all connections are tight.



► **Typical installation layout**

Ordering options

RB 1210	SRV only
RB 1211	OPSO and SRV
RB 1212	OPSO, UPSO and SRV

Flow capacity table

RB 1212 set-point 22 mbar – built-in SSV - AC 10

Inlet pressure	Capacity stmc/h
500 mbar	11
1 bar	14
2 bar	20
4 bar	30

Regas srl

www.regasitalia.com

Sales Department:
Via dell'Innominato, 8
24053
Brignano Gera D'Adda (BG)
tel + 39 0363 815867
fax + 39 0363 816196